

Home made "Monster" baffles.

I made these for my Samson Shogun Long Cannons but they could be made for anything if you choose the right sizes.

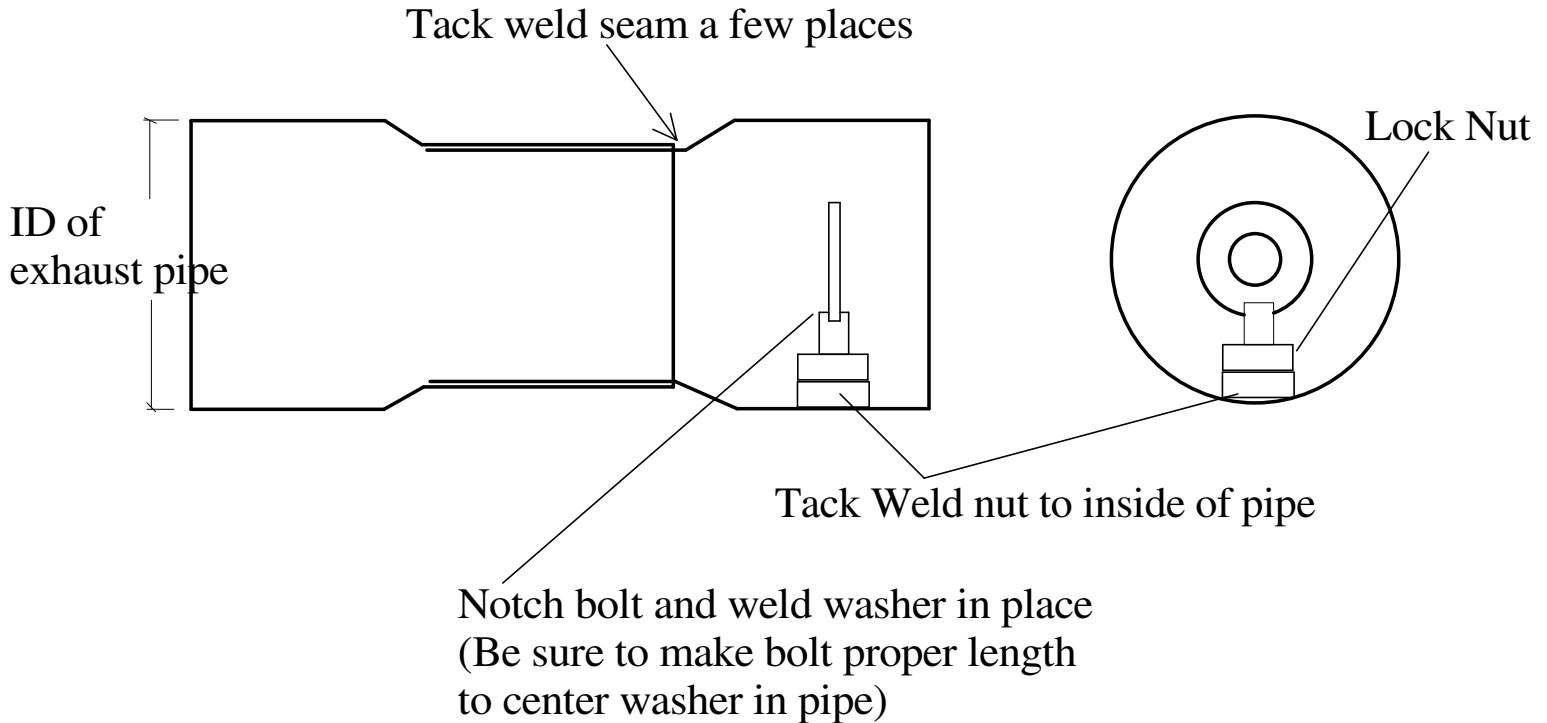
Parts required (for 2 baffles):

4- muffler reducing adaptors

2- 1/4" bolts (with heads cut off and notched to fit washer)

4- 1/4" nuts

First, choose the adaptors. The large ends must fit the ID of your pipes (mine are 2 1/8") The smaller diameters need to fit inside each other snugly (see below)



Washer can be adjusted for optimum back pressure.

Likely the longest process in making these was going through adaptors at the store to find the right ones. The rest was easy from there.

Norm