



INSTALLATION INSTRUCTIONS

Passenger Floorboard Mount Kit

STR-5KS57-40-00

V-STAR 650 & 1100



Please read and understand these instructions completely before installation to avoid injury to your self or damage to the motorcycle or accessory,

Dealer: These instructions contain important information for future reference and must be given to the customer.

1. Parts List:

Item	Part Name	Part Number	Description	Qty
1	Pass. F/Board Mount, left			1
2	Pass. F/Board Mount, right			1
3	Collar	(Use w/o S/Bags & Mts)	32mm Lg	4
4	Shaft			2
5	Washer, Special			2
6	Circlip			2
7	Spring, Compression			2
8	Ball		6.35mm (1/4") Diameter	2
9	Bolt, Hex Flange Head	(Use w/Saddlebags & Mts)	M8 x 1.25p x 25mm Lg	4
10	Bolt, Hex Flange Head	(Use w/o S/Bags & Mts)	M8 x 1.25p x 50mm Lg	4
11*	Billet Passenger Floorboard Set	STR-4NK57-20-01		1
12*	Passenger Floorboard Set	STR-4YE57-20-02		1

*Optional parts, not supplied with Floorboard Mount Kit...Must be purchased separately...

2. Preparation:

- Place motorcycle securely on its Side Stand.
- Remove left and right Passenger Foot Peg Assemblies & Bolts and store them.

3. Floorboard Mount Installation:

To mount the PASSENGER FLOORBOARD MOUNTS & Floorboards on a V-Star **without** Saddlebags & Saddlebag Mounts see Photo # 1.

- Select the right PASSENGER FLOORBOARD MOUNT, Item 2, two of the COLLARS, Item 3, and two of the HEX FLANGE HEAD BOLTS, Item 10.
- With the BOLTS through the FLOORBOARD MOUNTS then through the COLLARS install the FLOORBOARD MOUNTS where the original Footpeg Assembly was installed.
- Tighten the BOLTS to 2.3 m-kp. (17 ft-lbs) at this time.
- Repeat steps 3a) through 3c) for the left PASSENGER FLOORBOARD MOUNT, Item 1.

3.1 Floorboard Mount Installation:

To mount the PASSENGER FLOORBOARD MOUNTS & Floorboards on a V-Star **with** Saddlebags & Saddlebag Mounts in the "rear" mounting position see Photo # 2.

- Select the right PASSENGER FLOORBOARD MOUNT, Item 2, two of the HEX FLANGE HEAD BOLTS, Item 10.
- Put the BOLTS through the FLOORBOARD MOUNTS then through the Saddlebag Mount mounting holes and into the Frame.
- Tighten the BOLTS to 2.3 m-kp. (17 ft-lbs) at this time.

3.2 Floorboard Mount Installation:

To mount the PASSENGER FLOORBOARD MOUNTS & Floorboards on a V-Star **with** Saddlebags & Saddlebag Mounts in the “forward” mounting position see Photo # 3.

- d) Select the right PASSENGER FLOORBOARD MOUNT, Item 2, two of the HEX FLANGE HEAD BOLTS, Item 9.
- e) Put the BOLTS through the FLOORBOARD MOUNTS then into the Foot Peg mounting holes of the Saddlebag Mounts..
- f) Tighten the BOLTS to 2.3 m-kG (17 ft-lbs) at this time.

4. Floorboard Installation:

- a) Examine the Floorboard mounting “lug”, place the SPRING, Item 7, in the smaller hole.
- b) CAREFULLY put a BALL, Item 8, on the end of the Spring.

Note: a “dab” of grease on the Spring & Ball will help hold them in place, lubricate and prevent rust.

- c) Align the large hole in the Floorboard and the large hole in the SPECIAL WASHER, Item 5, and place the SPECIAL WASHER over the Spring & Ball with a small hole over the BALL and the “flat” side of the SPECIAL WASHER facing away from the Floorboard.
- d) Put this assembly between the Floorboard Mounting Lugs of the FLOORBOARD MOUNT, align the large holes and insert a SHAFT, Item 4, from front to rear and install a CIRCLIP, Item 6, in the “groove” of the SHAFT.
- e) Check to see that the Floorboard pivots up and “detents” in the up position. If it does not pivot or does not “detent” in the up position---remove the SHAFT and check the installation of the SPECIAL WASHER.

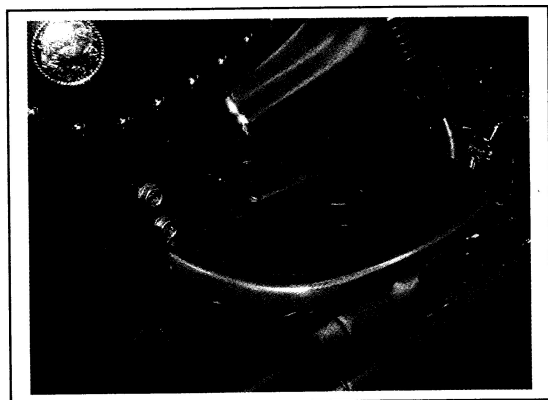


Photo # 1

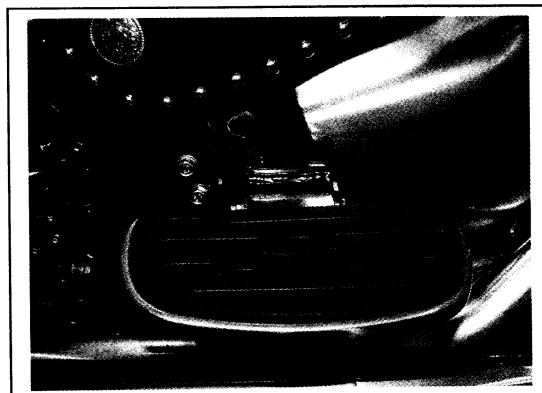


Photo # 2

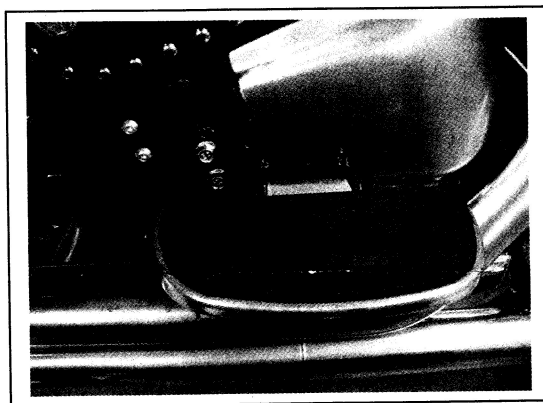


Photo # 3

- 4. **Maintenance:** Periodically check all fasteners for tightness and re-torque as required.
- 5. **Care and Cleaning:** See your Owners Manual
- 6. **Customer Service:** For further information see your Yamaha dealer