



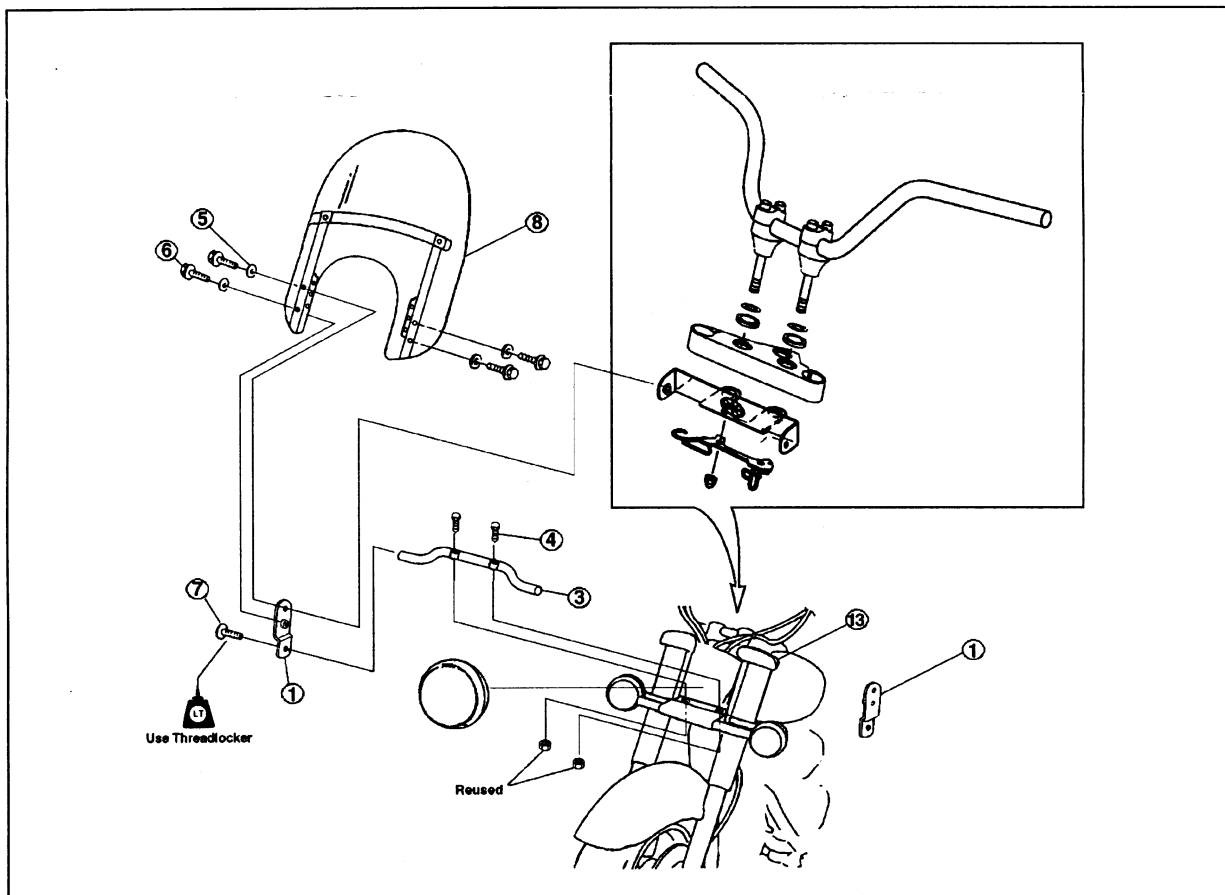
INTRODUCTION

Please read and understand these instructions completely before installation to avoid any possible injury to yourself or damage to your motorcycle and/or accessory.

DEALER: These instructions contain important information for future reference and must be given to the customer.

PARTS LIST

Item	Part Name	Description	Qty
①	Windshield Mount		2
②	Windshield Mount, Upper		1
③	Rod Assembly		1
④	Bolt, Hex Socket Head	M8-1.25P x 55	2
⑤	Washer	M8	4
⑥	Bolt, Flange Head	M8-1.25P x 20	4
⑦	Bolt, Button Head	M8-1.25P x 16	2
⑧	Windshield Assembly	Order separately	Ref.



PREPARATION

CAUTION:

Cover the Fuel Tank and Fender to protect from damage.

1. Place the motorcycle securely on its side stand.
2. Remove the Headlight Assembly mounting bolts. The nuts will be reused, store the bolts.

INSTALLATION

Study and refer to the illustration provided.

1. Remove the Cap Nuts securing the Handlebar/Handlebar Clamps assembly.
2. Remove the Cables Guide from the Handlebar Clamp Studs.
3. Put the UPPER WINDSHIELD MOUNT ②, between the Cables and the Fork Crown with the Handlebar Clamps Studs through the mounting holes in the WINDSHIELD MOUNT.
4. Replace the Cables Guide on the Handlebar Clamps Studs.
5. Reinstall the Cap Nuts on the Handlebar Clamps Studs and torque them to **4.0 m-kg (29 ft-lbs)**.
6. Lean the Headlight Assembly forward. Position the ROD ASSEMBLY ③ so its ends are forward of the mounting bushings, then align the bushings with the holes in the Headlight Bracket.
7. Insert the MOUNTING BOLTS ④, first through the ROD ASSEMBLY ③, bushings, then the Headlight Assembly Bracket mounting holes, and finally the mounting-bolt holes in the Lower Fork Clamp. Start the Nuts onto the BOLTS ④, but do not tighten yet.
8. Position the left-side WINDSHIELD MOUNT ①. Insert an M8 x 45 Bolt ④ through the WINDSHIELD MOUNT ① into the UPPER WINDSHIELD MOUNT. Do not tighten the screw yet.

9. Check that the lower holes of the WINDSHIELD MOUNT ①, align with the end of the ROD ASSEMBLY ③. Apply threadlocker to the threads of an M8 x 16 BOLTS ⑦, and then insert the Bolt through the WINDSHIELD MOUNT into the end of the ROD. Do not tighten the screw yet.

NOTE: Use Loctite® 242 on the threads.

10. Repeat steps 3 and 4 on the right side, using the WINDSHIELD MOUNT ①.
11. When all parts are installed, tighten the hardware to **17 ft-lb (23 Nm, 2.3 m-kg)** in the following order:
 - a. Lower ROD ASSEMBLY to Lower Fork Clamp
 - b. WINDSHIELD MOUNT to ROD ASSEMBLY

WINDSHIELD MOUNTING

1. Choose either the high or low mounting position. Position the WINDSHIELD ASSEMBLY ⑧, so its vertical brackets are on the outside of the Windshield Mounts. Attach the Windshield using the M8 x 20 BOLTS ⑥, and WASHERS ⑤.
2. Tighten the Bolts to **17 ft-lb (23 N, 2.3 m-kg)**.

MAINTENANCE

Periodically check mounting hardware for tightness. Re-torque if necessary.

CARE AND CLEANING

Refer to your **Owner's Manual**.

CUSTOMER SERVICE

For more information regarding installation, please contact your Yamaha dealer.